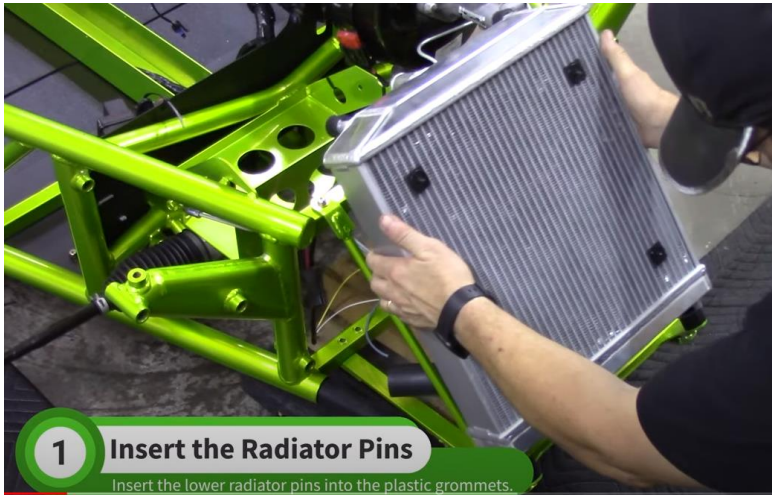


Video 20 (Installing the Radiator and front hoses)

Place the lower radiator pins into the grommets.



Align the upper studs and push them through the mounting holes.

Fasten with the M6 nut and washer. Tighten with a 10mm wrench.



Align the lower radiator hoses on the passenger side. Cut the frame hose where it meets the radiator hose.

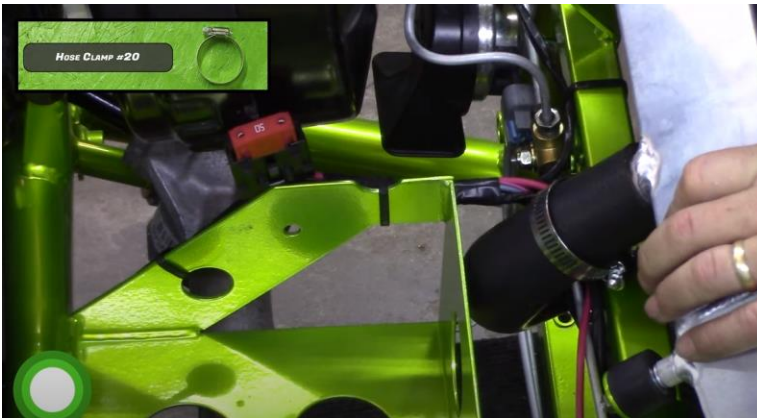


Place a hose clamp on both sides of the cut and install a small splice. It helps to spray a little silicone spray into the end of the hose.



Tighten the hose clamps onto the splice using a 5/16 socket.

Find the Z shaped hose in the stage 1 box and install it at the top of the radiator.



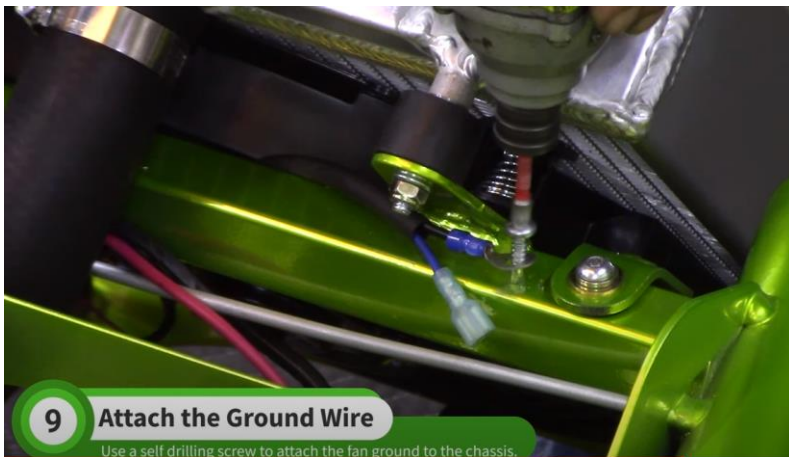
Align the other end of the hose with the driver side frame rail hose.

Cut the frame rail hose and install the splice just like on the passenger side.

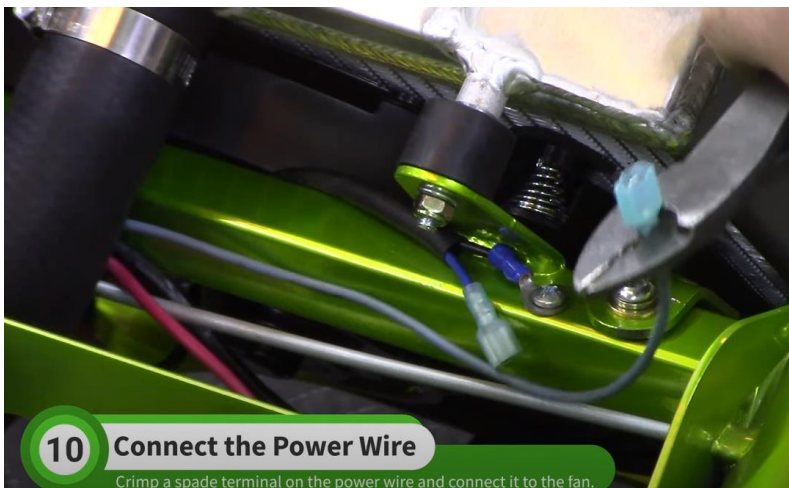


Tighten all the hose clamps.

Use a self-drilling screw to install the radiator fan ground on the top square tube.



Find the radiator fan wire that was extended earlier. Cut it to length and crimp on a spade terminal to connect it to the fan.



Zip tie the passenger side wires to the square tube.



Video 21 (Installing the fuel tank)

Find the two large T-bolt clamps in the stage 1 hardware box.

Bend the T-bolt clamp overlap as shown.



Install the large T-bolt clamp on the driver side of the chassis. Loop it around the 2 fuel tank mounting rails with the stud pointing down and install the nut.



Install the smaller T-bolt clamp on the passenger side.



The bolt should also be pointed down. Install the nut.

Slide the tank into the passenger side T-bolt clamp.

Slide the driver side T-bolt clamp over the fuel tank.

Move the tank so the driver side end is 6.5 inches from the fuel tank rail.



Cut 5 inches of left over main coolant hose.

Split this in half along the length of the hose.

Cut each half into 4 equal pieces for a total of 8 pieces.



Install these hose pieces at the corners of the tank, in line with the T-bolt clamps.

Half the pieces will go between the tank and the rail mounts and the other half will go between the T-bolt clamps.

Use a deep 7/16 socket to tighten the clamps. Stop as the clamp bottom outs on itself.



Video 22 (Installing the fuel filler neck, vent and cap)

Find the filler neck hose in the stage 1 hardware kit.

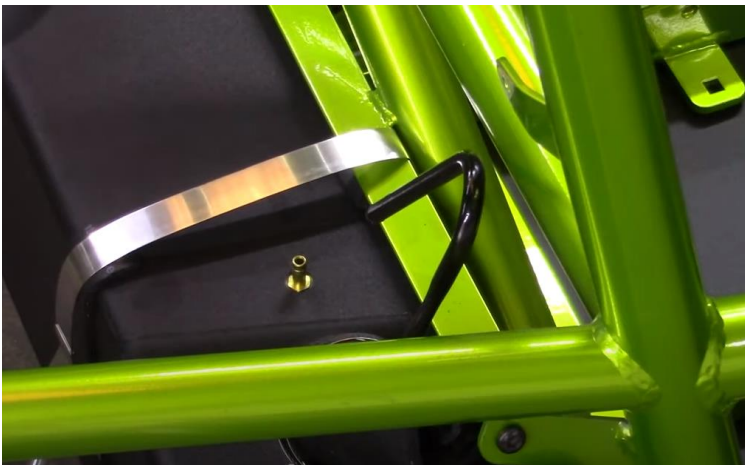
Push it onto the filler neck on the gas tank.

Slide on the 2 hose clamps from the K22F fuel tank hardware bag.

Install the donor filler neck fill valve using a T30 torx and donor screws.



Carefully bend the vent pipe back away from the frame.



Install the 5 inch long hose from the K22F bag onto one leg of the plastic tee from the same bag.

Do the same with the 1.5 inch long piece.



Push the 1.5 inch hose onto the steel vent tube.

Push the 5 inch hose onto the brass barb on the fuel tank.



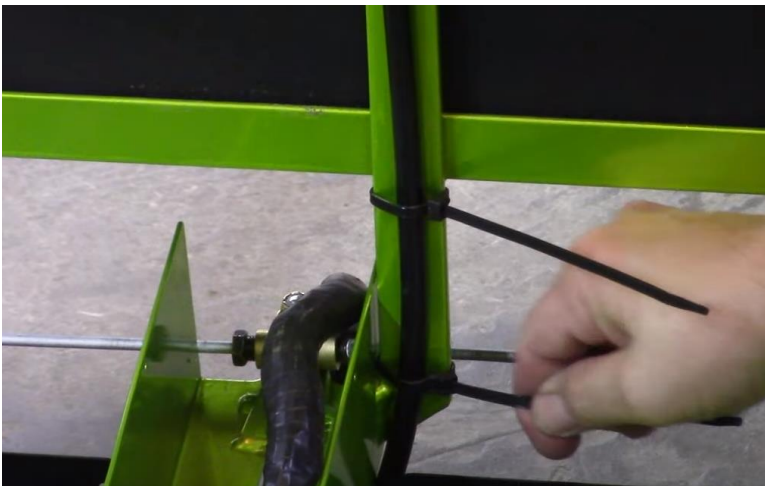
Find the 3/8 Nylon tubing in the stage 1 hardware box and cut a 4 foot long piece.

Push the nylon tube onto the plastic leg of the vent tee.



Zip tie the tubing along the shoulder bar.

Turn the tubing down at the center bar and run it in front of the fuel tank.



Trim the tube just past the bottom of the tunnel.

Tighten the hose clamps on the fuel filler hose.

Place a towel in the fuel filler neck and drill a 9/32 hole in the filler neck flange.



Install the strap in this hole and screw in the fuel cap.